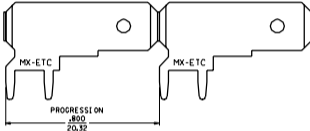
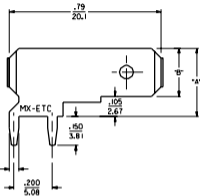
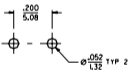


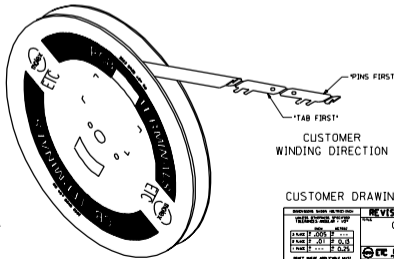
PIN ORIENTATION	MATERIAL NUMBER	ENGINEERING NUMBER	CUSTOMER NUMBER	CARRIER	PLATING SEE NOTE 6 & 7.	DIMENSION "A"	DIMENSION "B"
*TAB FIRST*	197134001	19713-4001	4000	LOOSE	TIN/LEAD	.356	.250
*TAB FIRST*	197134003	19713-4003	-	STRIP	TIN/LEAD	.356	.250
*PINS FIRST*	197134004	19713-4004	-	STRIP	TIN/LEAD	.356	.250



ISOMETRIC VIEW



RECOMMENDED P.W.B. HOLE LAYOUT



CUSTOMER WINDING DIRECTION

CUSTOMER DRAWING

- NOTES:
1. BARE EDGES PERMISSIBLE AT CARRIER CUT OFF.
  2. MATERIAL: BRASS.
  3. MATERIAL THICKNESS: .032 ±.001/0.813 ±0.031
  4. TAB CONFORMS TO NEMA SPECIFICATIONS.
  5. ALL DIMENSIONS AND NOTES ARE REFERENCE ONLY UNLESS NOTED.
  6. PLATING: 90/10 TIN LEAD 1oz/3.8M (oz) MIN THICKNESS.
  7. FINISH: MATTE

REV	REVISION
F	CHANGED FINISH ETC00010121 BPE 09/21/2000
E	FINISH CHANGE ETC00010117 2000/08/29 MEB
D	ADDED ORIENTATION ETC00010110 08/16/2000 BPE
C	ADD PART NO. 08-206-01 ET1999-0262
B	REMOVE NON-PLATED PARTS FROM CARRIER ETC00353 ET/0-0 JH
A	RELEASE TO CUSTOMER ETB0106 09/05 JH

REVISIONS

REVISE ONLY ON CAD SYSTEM

QUICK DISCONNECT  
PCB MOUNTABLE  
.250 X .032 TAB

ETC INC. PART NO. 1 OF 1 98/04/28

SEE CHART SD-19713-400

DATE: JH BY: RWD  
DATE: 09/05/00 BY: SC